

starting level	low	med	high	epic	points required	0	1	3	6	10	15
points to distribute	20	30	40	50	skill level	untrained	novice	apprentice	proficient	expert	master
					value	1	2	3	4	5	6



Species	+ 1 value to three skills of choice from the list	Other gains
Human	All skills	+3 points
Asari	Ranged, biotics, doctor, reasoning, charm	Better fist impression. Mind meld (biotic power).
Turian	Endurance, melee, ranged, tech	Rad resistance. +2 points.
Salarian	Ranged, agility, perception, doctor, tech, reasoning	Amphibious. Photographic memory. +2 points
Krogan	Endurance, melee, ranged, survival (N), biotics, intimidate	Rad-tox resistance. Multiple organs. Blood lust. +3 life. -1 roll to reasoning and charm checks.
Quarian	Ranged, tech and survival (C)	Hermetic suit. Augmented feat costs 6.
Drell	Endurance, melee, ranged, perception, survival	Eidetic memory. +2 points

Skill	Value
Endurance	_____
Melee	_____
Ranged	_____
Survival (N)	_____
Survival (C)	_____
Agility	_____
Perception	_____
Doctor	_____
Tech	_____
Reasoning	_____
Biotics	_____
Charm	_____
Intimidate	_____

Class	Gained powers and preferred weapons
Adept	Push/pull. Warp. Barrier. Singularity. Pistol. Light Armor.
Engineer	AI hack. Drone. Sabotage. Overload. Pistol. Light Armor.
Soldier	Adrenaline rush. Pistol. Shotgun. Assault rifle. Sniper rifle. Heavy weapons. Heavy Armor.
Vanguard	Push/pull. Barrier. Biotic charge. Pistol. Shotguns. Heavy Armor.
Infiltrator	AI hack. Tactical cloak. Sabotage. Pistol. Sniper rifles. Light Armor.
Sentinel	Push/pull. Warp. Tech armor. Overload. Pistol. Light Armor.

Feats	Points	Effect
Augmented	8	Ocular, cerebral, muscular, vascular, visceral, dermal, biotics.
Pilot	2/5	Fly chosen ship type in proficient (2) or master (5) level.
Medic	5	+3 MG cap. Heals 2xS. Treat different species w/o penalty. Neural shock.
Knowledge	2/5	Proficient (2) or master (5) level knowledge regarding a subject.
Focus	5	+1 S with specific power/weapon.
Training	5	Learn a power from another species/class or how to use chosen weapon.

Equipment	Points	Effects
Regular	0	+0 roll, defense: +0 (light armor) or +1 (heavy armor), shields: 5, firewall: 0
Exceptional	2	+1 roll, defense: +1 (light) or +2 (heavy), shields: 10, special ammo, medigel (3 or 6), tox and rad resistance, heavy weapon I (or extra ammo), firewall:1, booster
Elite	5	+2 rolls, defense: +2 (light) or +3 (heavy), shields: 15, heavy weapon II (or extra ammo), firewall:2

Name	_____
Life	_____
Actions	_____
Defense	_____
Armor	_____
Shield	_____

Personality			
Conduct (choose one)	Paragon	Mixed	Renegade
	Bonds (choose 1 or 2) Self, Love Interest, Family, Squad, Colony, Faith, Species, Citadel, Organics, Synthetics, All life forms, Organization / other: _____		
	Defining Characteristics (choose 0 or 1) Cheerful or Melancholic, Racist or Xenophilic, Spiritualist or Materialist, Progressive or Traditionalist, Rational or Emotional		

INDEX

General

Checks	Roll one or more D6 (depending on the value of the skill) for all attempts. Count the number of successes (S=4, 5 or 6). Each double 6s will increase your total S by one. All-ones or three ones is a critical miss.
Actions	Number of things you can do in a turn = 2 + 1 (one proficient skill). Actions: movement (4-5sq), attack with a weapon, use a power*, set up an ambush, concentration (continue an action next turn) * You cannot use same power more than once in a turn.
Life	Number of damage you can take before going down = 3 x endurance + 3 (Krogan)
Defense	Reduces the damage taken = 1-2 (agi/3) + 1-2 (cover)
Shield	Absorbs damage and prevents effects of biotics. Regenerates between combats (or by "take cover" action). Booster instantly regenerates shield.
Armor	Reduces the damage taken after shield is depleted = + 1-3 (equipment) + 1 (augment)
Firewall	Reduces effects of AI hack and sabotage. Depends on equipment (1-2) but can be set via tech check.
Resistance	+2 to armor vs radiation and/or toxins
Damage	Depends on the result of a skill check (S). Reduced by defense and armor of the enemy.
Ranges	Close (1 to 4sq). Medium (5 to 14sq). Far (15+sq). Powers are effective in close-medium range.

Augments

Aug: ocular	+1 value to ranged, perception. Built-in sensor module. Superior vision.
Aug: cerebral	+1 value to tech, reasoning. Built-in computer module. Superior intelligence.
Aug: muscular	+1 value to endurance, melee. Superior strength.
Aug: vascular	+1 value to agility, melee. +1 move action. Superior speed.
Aug: visceral	+1 value to endurance. Regeneration (1 life/turn). Tox resistance.
Aug: dermal	+1 value to endurance. +1 defense (armor). Rad resistance.
Aug: biotics	+2 value to biotics.

Equipment

Medigel	(melee range). 3 or 6 (medic) first aid uses. Used via doctor skill. Heals squamates.
Booster	Shield: fully regenerates shield. Stim: +2 actions for 3 turns. Biotic: +2S to biotic checks for 3 turns.
Omnitool	Used for tech checks. Exceptional: +1 roll 1 firewall. Elite: +2 rolls 2 firewall
Bioamp	Used for biotics checks. Exceptional +1 roll, Elite: +2 rolls
Melee	(melee range). Exceptional +1 roll, Elite: +2 rolls
Pistol	S: 0/-1/-2 (close/medium/far). Exceptional +1 roll, Elite: +2 rolls
Shotgun	S: +1/0/NA (close/medium/far). Exceptional +1 roll, Elite: +2 rolls
Assault Rifle	S: 0/+1/0 (close/medium/far). Exceptional +1 roll, Elite: +2 rolls
Sniper Rifle	S: -1/0/+1 (close/medium/far). Exceptional +1 roll, Elite: +2 rolls
	Grenade Launcher (Medium range. Effects 4sq area vs agi.). Bypasses defense. Frag (4-9 damage to all targets), EMP (7-12 damage to synth and shields), Stun (2 action damage to all targets), Smoke (creates smoke for 3 turns)
Heavy weapon-I (3 ammo. AP: 2)	Missile Launcher: 7-12 (D6+6) damage against a target at far range (vs agi). 3 damage to target with successful agi and to all adjacent targets (vs agi) or to tar. Bypasses defense. Flamer: 4-9 canonical close-range damage (½ to synth). Effects 4-9 sq area vs agi. Bypasses defense. Nuclear Launcher: Disables shields. 11-21 (2D6+9) damage to area (25-41sq) at far range. Bypasses defense. Rad damage: 4 per turn to all effected until end of combat.
Heavy weapon-II (1 ammo. AP: 3)	Arc Projector: Ranged (medium) attack with +5S bonus. Moves to the next (med) target at random with -1 S. 2x damage to synth-shield, 2 AP damage to unarmored org vs End. Singularity Projector (10 tons/area/med). Effects 9-13sq. Ineffective against shield. 15 damage to all targets.
Special ammo	Armor Piercing (+2 damage to armored), Phasic (+2 damage to shields)

Abilities and Powers (Species)

Mind meld	Asari Biotics	Communicate with (S:1), read minds of (S), or dominate (S-2) organics for a turn. Ineffective against shield. Concentration. (vs Reas.)
Blood lust	Krogan Reasoning	Krogans are difficult to control/direct in battle unless they attack nearest target (S:1 or 2 to bypass).

Abilities and Powers (Classes)

Push/pull	Biotics	Push or pull objects with biotics ($2^{S-1} \times 100\text{kg}$). Bypasses defense. May cause damage (S). Ineffective against shield. May target multiple enemies (-1 S for each).
Warp	Biotics	Deal biotic damage (S) to a target. Ineffective against shield. Cannot hit behind cover. Armor penetration.
Barrier	Biotics	Boosts (or generates) shield with biotics check ($2XS+2$) for a turn with 1S or more.
Singularity	Biotics	Alter gravity on target 4sq area ($2^{S-1} \times 100\text{kg}$) for 3 turns. Ineffective against shield. Floaters receive 2X damage from push and weapons.
AI hacking	Tech	Stun (AP damage: S-firewall) or control (Turns: S/2-firewall) synthetics.
Drone	Tech	Create and control a regular (S:1), advanced (S:2) or combat (S:3) drone. Concentration.
Sabotage	Tech	Overheat weapons, omni-tools or bio-amps for S/2-fw turns or incinerate mechanical equipment causing armor penetrating damage (S/2). Damage may stun organics (1 AP, damage vs End or Reas). Bypasses defense.
Overload	Tech	Damages shields ($3 \times S$) and synth (S) in a sq. Cannot hit behind a cover. Bypasses defense. Area of effect can be increased (-1 S, +1 sq).
Adrenaline rush	Endurance	1 (S:2), 2 (S:5) or 3 (S:9) bonus attack actions each turn for the next 4 turns.
Biotic charge	Biotics	Charge (AP:2) with a bonus to melee damage (S). May grant bonus attack (S:3+).
Tactical cloak	Tech	Invisibility over time (S turns). When invisible +2 S to attack.
Tech armor	Tech	Boosts max shields of the squad (by S) or repairs target shields to its max value (S:3). Undamaged shields are always at max.
Neural shock	Doctor Medic	Melee range: S/2 AP damage to organics (vs Reas). May shut down biotic power for a turn (vs End).

Abilities and Powers (Skills and weapons)

Overkill	Proficient Ranged/ Melee	(melee/pistol/assault rifle) Attack two adjacent targets or same target twice. -1 to S.
Covering Fire	Apprentice Ranged	(pistol/assault rifle) Provides defense bonus to one or more allies for a turn (S/2)
Carnage	Proficient Ranged	(shotgun) (2AP) +S damage in a close-range attack. Can hit the next adjacent enemy (primary weapon damage). May knock enemies down (vs End).
Assassinate	Proficient Ranged	(sniper rifle) (2AP) +3 to S against a target in far range.
Ambush	Apprentice	Ready an action with a skill which will be triggered as a response (like enemy leaving cover, ally hitting an enemy with an overload/pull etc.)
First aid	Novice doctor	Heals: S or 2S (medic) -1 for other species (except for medic).
Take cover	-	Stay in cover to improve defense (+1) for a turn and regenerate shields (+2).
Firewall	Apprentice Tech	Create a firewall of S/2 for all squad for 4 turns.

Cerberus



Assault Trooper

Shield	0
Life	6
Defense	1
Rifle	2D6
-range	0/1/0
Frag gr	2D6-
AP:2	armor
vs agi	dam
Melee	2D6
-extra	(stun)

Centurion

Shield	5
Life	9
Defense	1+1
Rifle	4D6
-range	0/1/0
Smoke gr	Smoke
Melee	2D6
-extra	stun

Guardian

Shield	0
Life	9
Defense	0+1+2*
Pistol	3D6
-range	0/-1/-2
Melee	3D6
-dam	2-stun

Combat Engineer

Shield	5
Life	6
Defense	0
Pistol	2D6
-range	0/-1/-2
Hack	4D6
Turret	AP:4
Firewall:	1

Turret

Shield	5
Life	6
Defense	0+2*
Attack	4D6
-range	0/1/0
Firewall	0



Nemesis

Shield	5
Life	3
Defense	2+1
Sniper	5D6
-range	-1/0/1

Phantom

Shield	10
Life	12
Defense	3+2
Actions	3
Blade	5D6
Cloak	+2 S

Atlas

Shield	15
Life	27
Defense	0+3*
Cannon	5D6
RPG	2D6-arm
vs agi	dam
Claw	4D6
Firewall	2

Geth



Trooper	
Shield	0
Life	6
Defense	1
Rifle	2D6
-range	1/2/1
Firewall:	0



Rocket Trooper	
Shield	5
Life	6
Defense	0
RPG	D6+3 - armor
AP:2	vs agi
Firewall:	1



Pyro	
Shield	5
Life	6
Defense	0
Flamer	D6+3 - armor
AP:2	vs agi
Firewall:	1



Hunter	
Shield	10
Life	12
Defense	0+2
Shotgun	4D6
-range	1/0/X
Cloak:	+2 S
Firewall:	2



Prime	
Shield	15
Life	24
Defense	0+3
Actions	3
Pulse ca	6D6
Drone (AP:1)	
Turret (AP:1)	
Once per com.	
Boost (+1)	
Firewall:	3



Adv. Drone	
Shield	10
Defense	2*
Shock	3D6
2x dam to sh.	
Firewall:	1



Turret	
Shield	5
Life	6
Defense	0+2
Rifle	4D6
Firewall:	1



Armature	
Shield	20
Life	30
Defense	0+4*
Pulse ca	6D6
Shock	5D6
Area	+2stun
Firewall:	4

Reapers



Husks	
Shield	0
Life	3
Defense	0*
Grab	3D6



Cannibal	
Shield	0
Life	6
Defense	0
Arm-gun	2D6
-range	0/1/0
Frag gr	2D6
-dam	2D6
AP:	2



Marauder	
Shield	5
Life	9
Defense	1+1
Rifle	3D6
-range	0/1/0
Boost	+1S



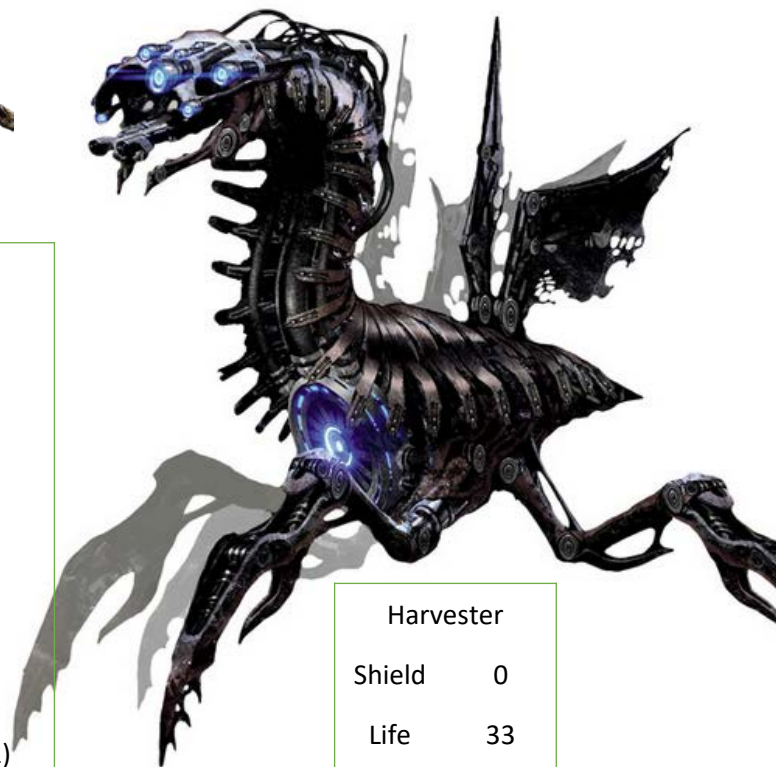
Ravager	
Shield	0
Life	12
Defense	0+2*
Cannon	4D6
Swarmer	2 tox dam/turn
Close range	Bypasses shield
Death: acid	8 tox dam
dam vs agi	Bypasses shield
close range	



Brute	
Shield	5
Life	18
Defense	0+3*
Crush	5D6
Charge	+2 S

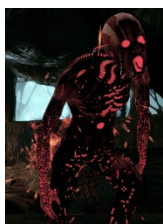


Banshee	
Shield	15
Life	24
Defense	0+2*
Actions	3
Teleport	5m
Warp	6D6
Impale	6D6
-extra	Stun (2)
Barrier	6D6
	6D6/2dam
Nova	Knockdown
	Vs End



Harvester	
Shield	0
Life	33
Defense	0+4*
Cannon	7D6

Collectors



Abomination

Shield	0
Life	3
Defense	0*
Grab	3D6



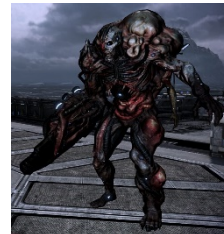
Drone

Shield	5
Life	6
Defense	1
Rifle	2D6
Blade	2D6
-dam	3



Assassin

Shield	5
Life	6
Defense	2
Sniper	4D6



Scion

Shield	0
Life	9
Defense	0+3*
Cannon	5D6



Praetorian

Shield	25
Life	24
Defense	0+4*
Actions	3
Cannon	7D6
Claw	7D6
Recharge (3AP)	7D6 Sx5 shield

Captain

Shield	10
Life	12
Defense	2 + 2
Actions	3
Rifle	6D6
-range	0/1/0
Seeker swarm	1 AP Conc.
	-1 AP vs 3 End



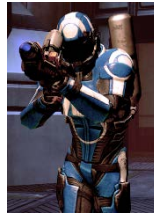
Blue Suns



Legion	
Shield	5
Life	9
Defense	2
Rifle	3D6
-range	0/1/0
Phasic (+2 vs shield)	



LOKI	
Shield	0
Life	3
Defense	0*
Pistol	2D6
-range	0/-1/-2
Firewall	0



Pyro	
Shield	0
Life	6
Defense	1
Flamer	D6+3 - armor
AP:2 vs agi	



Centurion	
Shield	10
Life	12
Defense	2+1
Shotgun	5D6
-range	1/0/X
Shield rep	4D6
Overload	4D6
Firewall	1



Commander	
Shield	10
Life	15
Defense	2+2
Rifle	6D6
-range	0/1/0
AP (+2 vs arm)	
Boost: +1	
Booster (1)	



YMIR	
Shield	10
Life	21
Defense	0+3*
Cannon	5D6
RPG	2D6-arm dam
Vs agi	
Claw	4D6
firewall	3

Eclipse



Trooper	
Shield	0
Life	6
Defense	1
Rifle	2D6
-range	0/1/0
Flash gr	1 turn



LOKI	
Shield	0
Life	3
Defense	0*
Pistol	2D6
-range	0/-1/-2
Firewall	0



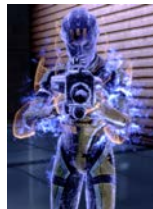
Heavy	
Shield	0
Life	6
Defense	0
RPG	D6+3 - armor
AP:2	vs agi



Operative	
Shield	10
Life	12
Defense	2+1
Actions	3
SMG	4D6
-range	0/-1/-2
Hack	5D6
Shield rep.	5D6
Sabotage	4D6
Drone (1 AP)	
Firewall: 2	



Drone	
Shield	5
Defense	1
Shock	D6
2x vs shield	
Firewall:0	



Commando	
Shield	15+
Life	15
Defense	2+2
Actions	3
Shotgun	5D6
-range	1/0/X
Barrier	6D6
Warp	6D6
Boost: +1 S	

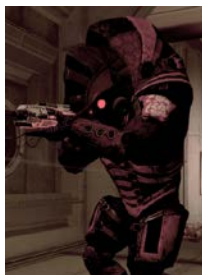
YMIR	
Shield	10
Life	21
Defense	0+3*
Cannon	5D6
RPG	2D6-arm
Vs agi	dam
Claw	4D6
firewall	3

Blood Pack



Trooper

Shield	0
Life	6
Defense	1+1
Rifle	2D6
-range	0/1/0
Regenerate:	1



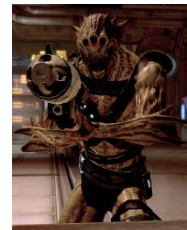
Warrior

Shield	5
Life	12
Defense	0+2
Shotgun	4D6
-range	1/0/X
Headbutt	4D6



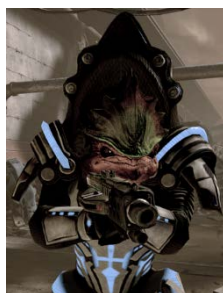
Pyro

Shield	0
Life	3
Defense	0+1
Flamer	D6+3 - armor
AP:2	
vs agi	
Regenerate:	1



Boom-squad

Shield	0
Life	3
Defense	0+1
RPG	D6+3 - armor
AP:2	
vs agi	
Regenerate:	1



Battlemaster

Shield	5+
Life	24
Defense	1+3
Action	3
Shotgun	6D6
-range	1/0/X
Headbutt	5D6
Barrier	4D6
Charge	4D6

Drones

Drone	Normal	Advanced	Combat
Shield	5	10	15
Defense	1	2	3
Shock	2D6	3D6	4D6
Firewall	0	1	2

2x vs shield